

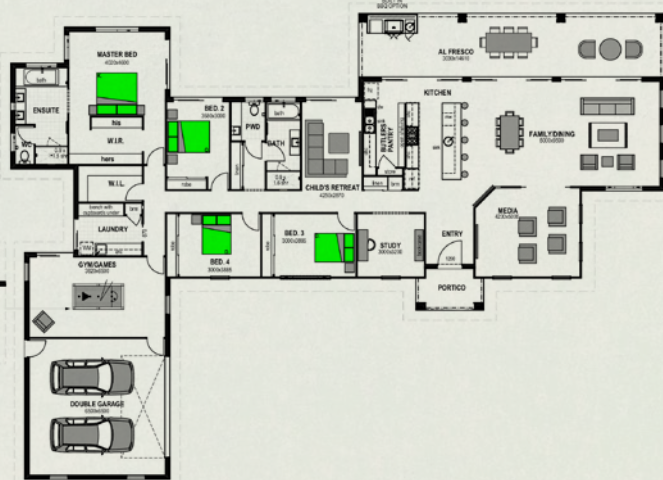


**newfern**

ESTATE | FERNVALE

# House & Land

## MONTEGO 393 SKILLION FACADE



From  
**\$1,252,190**

**Floor Areas:**

- Porch 5.6m<sup>2</sup>
- Alfresco 44.2m<sup>2</sup>
- Garage 46.6m<sup>2</sup>
- Living 298.2m<sup>2</sup>
- TOTAL: 394.6m<sup>2</sup>**

**Features:**

- Media
- Study
- Butler's Pantry
- Games Room
- Child's Retreat
- Walk-in Linen

Floor plan and dimensions shown are for the Classic Façade. **Width: 31.3m Depth: 22.2m**



**newfern**

ESTATE | FERNVALE

[newfernestate.com.au](http://newfernestate.com.au)



Whilst all details have been carefully prepared, no warranty is given either expressly or impliedly by the vendors or their agents in respect of the accuracy of the photographs, information and illustrations. Photographs, information and illustrations are indicative only for presentation purposes and are subject to change. They should not be relied upon as an accurate representation of the final product. Specification may change at any time.