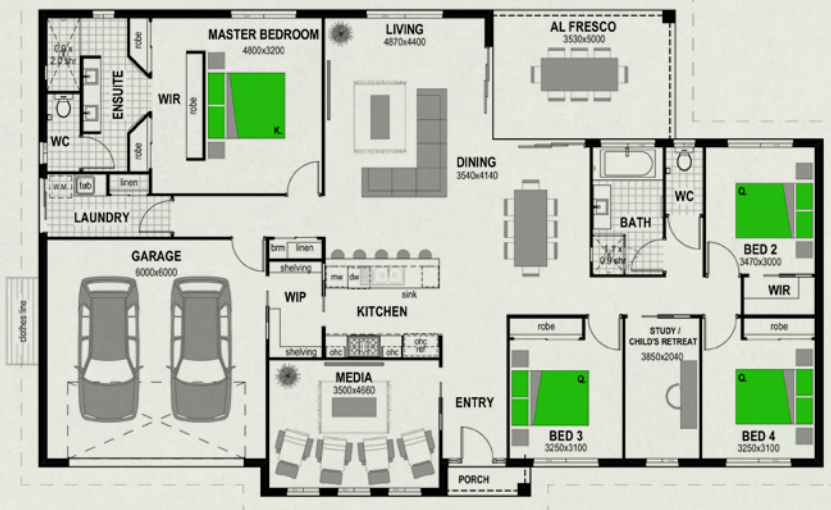




**newfern**  
ESTATE | FERNVALE

# House & Land

## INVERELL 260 CLASSIC FACADE



From  
**\$976,288**

**Floor Areas:**

- Porch 1.8m<sup>2</sup>
- Alfresco 17.7m<sup>2</sup>
- Garage 38.7m<sup>2</sup>
- Living 202.2m<sup>2</sup>
- TOTAL: 260.4m<sup>2</sup>**

**Features:**

- Media
- Child's Retreat
- Walk-in Pantry

Floor plan and dimensions shown are for the Classic Façade. **Width: 21.5m Depth: 13.3m**



**newfern**  
ESTATE | FERNVALE

[newfernestate.com.au](http://newfernestate.com.au)



Whilst all details have been carefully prepared, no warranty is given either expressly or impliedly by the vendors or their agents in respect of the accuracy of the photographs, information and illustrations. Photographs, information and illustrations are indicative only for presentation purposes and are subject to change. They should not be relied upon as an accurate representation of the final product. Specification may change at any time.